

# **JDLCCCE-JE 2023**

Jharkhand Diploma Level Combined Competitive Exam

**Junior Engineer Examination**

Jharkhand Staff Selection Commission

## **Mathematics and Mental Aptitude**

---

Comprehensive Theory with  
Solved Examples and Practice Sets





**MADE EASY Publications Pvt. Ltd.**

Corporate Office: 44-A/4, Kalu Sarai (Near Hauz Khas Metro Station), New Delhi-110016

E-mail: [infomep@madeeasy.in](mailto:infomep@madeeasy.in)

Contact: 9021300500

Visit us at: [www.madeeasypublications.org](http://www.madeeasypublications.org)

**JDLCCCE-JE : Mathematics and Mental Aptitude**

Copyright © by MADE EASY Publications.

All rights are reserved. No part of this publication may be reproduced, stored in or introduced into a retrieval system, or transmitted in any form or by any means (electronic, mechanical, photo-copying, recording or otherwise), without the prior written permission of the above mentioned publisher of this book.

**First Edition: 2023**

MADE EASY PUBLICATIONS has taken due care in collecting the data and providing the solutions, before publishing this book. In spite of this, if any inaccuracy or printing error occurs then MADE EASY PUBLICATIONS owes no responsibility. MADE EASY PUBLICATIONS will be grateful if you could point out any such error. Your suggestions will be appreciated.

© All rights reserved by MADE EASY PUBLICATIONS. No part of this book may be reproduced or utilized in any form without the written permission from the publisher.

## Section-A

### Mathematics ..... 1-246

1. Number Systems .....	1
2. BODMAS .....	17
3. Decimals .....	20
4. Fractions .....	23
5. LCM and HCF .....	28
6. Ratio and Proportion .....	34
7. Percentages .....	55
8. Mensuration .....	71
9. Time and Work .....	91
10. Time and Distance .....	102
11. Simple and Compound Interest .....	121
12. Profit and Loss .....	132
13. Algebra .....	144
14. Geometry .....	149
15. Trigonometry .....	165
16. Elementary Statistics .....	168
17. Square Root .....	172
18. Age Calculations .....	175
19. Calendar and Clock .....	179
20. Pipes and Cisterns .....	185
21. Miscellaneous .....	190

## Section-B

### Mental Aptitude..... 247-398

1. Analogies .....	247
2. Alphabetical and Number Series.....	251
3. Coding and Decoding .....	256
4. Mathematical Operations .....	261
5. Relationships .....	265
6. Syllogism .....	275
7. Jumbling .....	286
8. Venn Diagram.....	290
9. Data Interpretation and Sufficiency.....	295
10. Conclusions and Decision Making.....	331
11. Similarities and Differences.....	340
12. Analytical Reasoning .....	342
13. Classification .....	348
14. Directions.....	352
15. Statement-Arguments and Assumptions .....	359
16. Miscellaneous.....	364

## Section-C

### Model Test Papers ..... 399-410

1. Model Test Paper-1 .....	399
2. Model Test Paper-2 .....	405





# Number Systems

## CHAPTER

# 1



### Learning Objectives

After completion of this chapter, you should have a thorough understanding of the following:

- Digits and Numbers
- Arithmetical Operations
- Index form
- Arithmetic Progression
- Geometric Progression
- Important formulae
- Kinds of questions which are asked in JE exam
- Methods of solving.



### Introduction to the topic

This chapter will give you a clear understanding of the definitions and the concepts, and help you develop a keen insight about different kinds of Number System questions asked in the exam.



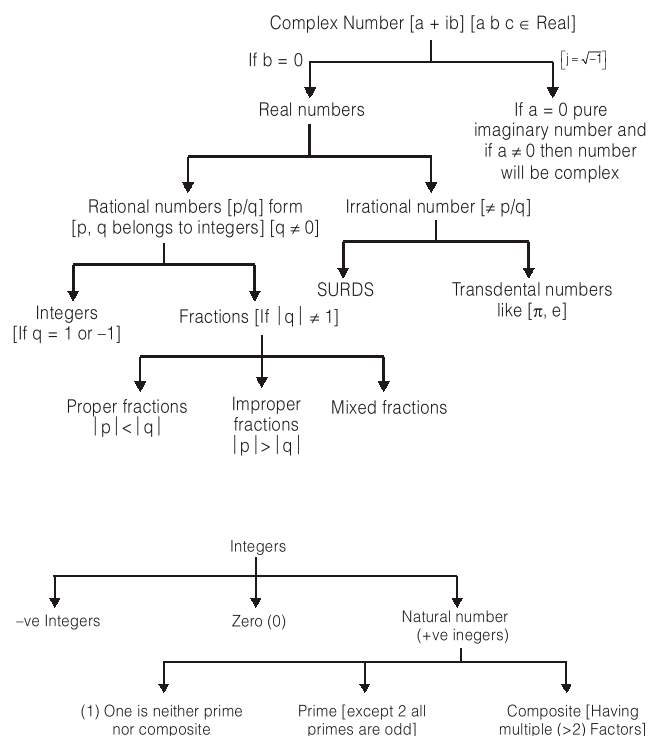
### Type of Questions

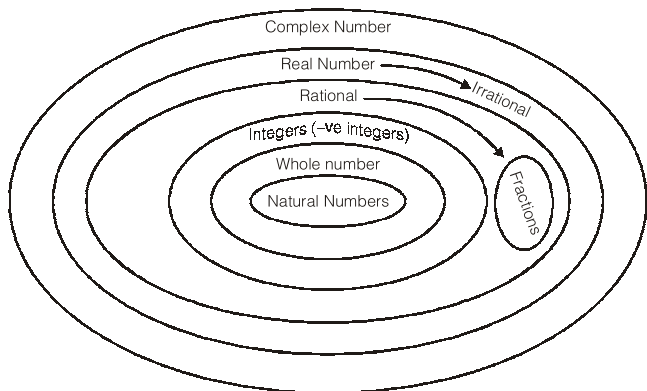
Question asked from this topic are based on concepts: Digits and Numbers, Arithmetical Operations, Index form, Arithmetic Progression, Geometric Progression.

In Quantitative Aptitude (QA), Number System is one of the module which is of critical importance. We can

consider this module as the back bone as well as basic foundation and building block for QA as well as for reasoning. Applications of concepts of numbers can be easily found in puzzles, reasoning based questions, number series and many more reasoning areas. This is why it is our suggestion to students to understand the concepts discussed in the module thoroughly alongwith understanding of applications.

### 1. Classifications of Numbers





Our main focus in this module of numbers is on **real number system**. However in context, of imaginary number only following property is important.

### Imaginary Numbers

$$i = \sqrt{-1} \Rightarrow i^{4K+1} \equiv \sqrt{-1} \equiv i$$

$$i^2 = -1 \Rightarrow i^{4K+2} \equiv -1 \equiv i^2$$

$$i^3 = -i \Rightarrow i^{4K+3} \equiv -i \equiv i^3$$

$$i^4 = 1 \Rightarrow i^{4K} \equiv 1 \equiv i^4$$

**Question:** What is the value of expression

$$\frac{i^{12} + i^{13} + i^{14} + i^{15}}{i^{18} + i^{19} + i^{20} + i^{21}} ?$$

- (a)  $i^2$  (b)  $-1$   
(c)  $1/i^2$  (d) None of these

**Ans. (d)**

**Solution:**

$$\frac{i^{12}(1+i+i^2+i^3)}{i^{18}(1+i+i^2+i^3)}$$

If we commit a mistake of cancelling out common terms in numerator and denominator options a, b, c all one correct hence my answer should be (d) but

$$\begin{aligned} \text{expression } 1 + i + i^2 + i^3 \\ = 1 + i + (-1) + (-i) = 0 \end{aligned}$$

hence expression in question leading to undetermined

form  $\left[\frac{0}{0}\right]$  hence correct answer is option (d).

### Real Number System

Entire real numbers group of rational and irrational numbers combined forms the set of real number, which is represented by symbol  $\rightarrow R$ . All real numbers can be represented as points on a real number line.



### Rational Number

All the numbers in  $p/q$  ( $q \neq 0$ ) form are rational numbers [ $p, q$  are integers] set of rational number is represented by  $\rightarrow Q$ .

### Rational Numbers Follow

Following forms of representations.

(a) Terminating decimal forms

for example 0.125

$$\Rightarrow 0.125 = \frac{125}{1000} = \Rightarrow \text{Rational}$$

(b) Nonterminating but recurring decimal forms.

(i) For example

$$Q = 0.37373737 \dots$$

$$100Q = 37.373737 \dots$$

$$99Q = 37 \Rightarrow Q = 37/99 \Rightarrow \text{rational}$$

(ii) For example

$$Q = 0.37292929 \dots$$

$$100Q = 37.292929 \dots$$

$$10000Q = 3729.292929 \dots$$

$$9900Q = (3729 - 37)$$

$$Q = \left( \frac{3729 - 37}{9900} \right)$$

$$= \frac{p}{q} \text{ form} \Rightarrow \text{rational}$$

### Fraction

All rational numbers in which  $|q| \neq 1$  comprise the set of fractions.

### Proper Fractions

If  $|p| < |q|$

then fraction is proper fraction. Value of proper fraction is always in between  $(-1 \text{ to } +1)$

$$[-1 < p/q < 1]$$

### Improper Fraction

If  $|p| > |q|$

then fraction is improper fraction value of improper fraction is  $< -1$  or more than  $(>) 1$

### Mixed Fraction

Just a modified form if improper fraction.

$$\text{Eg. } \underbrace{\frac{13}{4}}_{\text{Improper fraction}} \Rightarrow \underbrace{3\frac{1}{4}}_{\text{equivalent mixed fraction}}$$

## 2. Integers

The set of all rational numbers in  $p/q$  form [ $|q| = 1$ ] is called as integers. It is denoted by

$$I = \{ \dots -3, -2, -1, 0, 1, 2, 3, \dots \}$$

It includes.

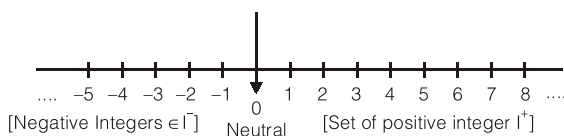
### Negative Integers

$$I^- = \{ \dots -7, -6, -5, -4, -3, -2, -1 \}$$

### Positive Integers

$$I^+ = \{ 1, 2, 3, \dots \}$$

**Note:** Status of 0 (zero) is neutral neither positive nor negative.



### Natural Numbers

All counting numbers or set of positive integers is considered as set of natural numbers. It denoted by set  $[N \text{ or } I^+]$

$$N = \{ 1, 2, 3, 4, \dots \}$$

### Whole Number

Set of all nonnegative integers are considered as whole number; it is denoted by set  $W = \{ 0, 1, 2, 3, 4, \dots \}$

**Note:** If terms “numbers” is used without any qualifier than it means natural number hence forth.

## 3. Even Numbers & Odd Numbers

### 1. Even Numbers

All numbers divisible by 2 considered as even numbers.

**Note:** Property evenness is applicable in entire integral number line. Hence  $[-2, -4, -6, \dots]$  are even integers but they are not even numbers.

### 2. Odd Number

All numbers not divisible by 2 one odd.

$[1, 3, 5, 7, \dots]$  are odd numbers.

$[\dots -5, -3, -1 \dots]$  are odd integers.

### Properties of numbers based on even & odd

$$\text{Even} + \text{Even} = \text{Even}$$

$$\text{Odd} + \text{Odd} = \text{Even}$$

$$\text{Odd} + \text{Odd} + \text{Odd} = \text{Odd}$$

$$\text{Odd} \times \text{Odd} = \text{Odd}$$

$$\text{Odd} \times \text{Even} = \text{Even}$$

$$\text{Even} \times \text{Even} = \text{Even}$$

$$(\text{Even})^{\text{Odd}} \Rightarrow \text{Even}$$

$$(\text{Odd})^{\text{Even}} \Rightarrow \text{Odd}$$

$$(\text{Even})^{\text{Odd}} \Rightarrow \text{Even}$$

$$(\text{Odd})^{\text{Odd}} \Rightarrow \text{Odd}$$

These properties can be used extensively to find out alternative method to get answers quickly with the help of options. Here are few examples.

**Ex.1** There are two, 2-digit numbers  $ab$  and  $cd$ ,  $ba$  is the another two digit number prepared by reversing the digits of  $ab$ , if  $ab \times cd = 493$ ,  $ba \times cd = 2059$ , what is value 'g' sum of  $(ab + cd) = ?$

$$(a) \ 43$$

$$(b) \ 45$$

$$(c) \ 47$$

$$(d) \ 46$$

**Sol.** (d)

Value 'g' =  $ab \times cd$  is odd.

It means  $ab$  and  $cd$  both are odd.

Hence there sum must be even, only one option is there which even. Hence answer is option d.

**Ex.2** I have multiple gift vouchers of value, Rs. 101, 107, 111, 121, 131, 141, 151, 171. I have to pick exactly 10 vouchers to make payment of Rs. 1121. In how many ways I can do that?

$$(a) \ \text{one}$$

$$(b) \ \text{two}$$

$$(c) \ \text{more than two}$$

$$(d) \ \text{none of these}$$

**Sol.** (d)

Reasoning is very simple, if I'll add 10, odd numbers their sum will be always even. Hence there is not way to accomplish this.

## 4. Prime Number & Composite Numbers

### Prime Numbers

Number which are perfectly divisible either by 1 or by itself only are called prime number. Then 25 prime number are there which are less than 100. 2 is the only even prime number. # All prime numbers greater than 5 can be expressed as  $(6K \pm 1)$  ( $K \in N$ ) form but all the numbers in form of  $(6K \pm 1)$  form are not necessarily prime.

## Composite Numbers

All the numbers which can be factorized into multiple prime numbers are called composite number.

P.S. Number (1) one is neither prime nor composite.

### How to check whether given number is prime or not?

1. Take the square root of number
2. Consider the prime numbers, starting from 2 to till number. Take all prime numbers upto this square root value or nearest higher integer.
3. If number is divisible by any of these prime numbers. Then number is composite.

### Learn it by example:

Suppose I want to check, is 629 prime or not?

Square root of 627 is just more than 25. Then prime no. till 25 are 2, 3, 5, 7, 11, 13, 17, 19, 23, 29.

629 is not divisible by 2, 3, 5, 7, 11, 13 but is divisible by 17.

Hence it is not prime number

### One more example: 179

Square root of 179 is more than 13. Hence I need to check divisibility of 179 against 2, 3, 5, 7, 11, 13, 17

179 is not divisible by either of these hence it is a prime number.

## 5. Test of Divisibility

### 1. Divisibility by 2

A number is divisible by 2 if the unit digit is zero or divisible by 2.

Eg.: 22, 42, 84, 3872 etc.

### 2. Divisibility by 3

A number is divisible by 3 if the sum of digit in the number is divisible by 3.

Eg.: 2553

Here  $2 + 5 + 5 + 3 = 15$ , which is divisible by 3 hence 2553 is divisible by 3.

### 3. Divisibility by 4

A number is divisible by 4 if its last two digit is divisible by 4.

Eg.: 2652, here 52 is divisible by 4 so 2652 is divisible by 4.

Eg.: 3772, 584, 904 etc.

### 4. Divisibility by 5

A number is divisible by 5 if the units digit in number is 0 or 5.

Eg.: 50, 505, 405 etc.

### 5. Divisibility by 6

A number is divisible by 6 if the number is even and sum of digits is divisible by 3.

Eg.: 4536 is an even number also sum of digit  $4 + 5 + 3 + 6 = 18$  is divisible by 3.

Eg: 72, 8448, 3972 etc.

### 6. Divisibility by 8

A number is divisible by 8 if last three digit of it is divisible by 8.

Eg.: 47472 here 472 is divisible by 8 hence this number 47472 is divisible by 8.

### 7. Divisibility by 9

A number is divisible by 9 if the sum of its digit is divisible by 9.

Eg.: 108936 here  $1+0+8+9+3+6$  is 27 which is divisible by 9 and hence 108936 is divisible by 9.

### 8. Divisibility by 10

A number is divisible by 10 if its unit digit is 0.

Eg.: 90, 900, 740, 34920 etc.

### 9. Divisibility by 11

A number is divisible by 11 if the difference of sum of digit at odd places and sum of digit at even places is either 0 or divisible by 11.

Eg.: 1331, the sum of digit at odd place is  $1+3$  and sum of digit at even places is  $3+1$  and their difference is  $4 - 4 = 0$ . so 1331 is divisible by 11.

## 6. Factors of Composite Number

Composite numbers are the numbers which can be factorised into prime factors, or simply we can say that composite number are those numbers which are not prime.

For eg.: 8 is a composite number since it can be factorised into

$$8 = 2 \times 2 \times 2$$

Similarly 9 is also a composite number, i.e

$$9 = 3 \times 3$$

Composite number  $= P_1^{\lambda_1} \times P_2^{\lambda_2} \times P_3^{\lambda_3} \dots P_n^{\lambda_n}$  here,  $P_1, P_2,$

$P_3 \dots P_n$  are distinct prime numbers and  $\lambda_1, \lambda_2,$

$\dots \lambda_n$  are their respective powers.



Factors of composite number =

$$(\lambda_1 + 1) \cdot (\lambda_2 + 1) \dots (\lambda_n + 1)$$

For eg.:  $18 = 2 \times 3 \times 3 = 2^1 \times 3^2$

Factors of  $18 = (1 + 1) \times (2 + 1) = 2 \times 3 = 6$

Clearly it contains six factors 1, 2, 3, 6, 9 and 18

Factors of other Composite numbers  $6 = 2^1 \times 3^1$

Factors =  $(1 + 1) \times (1 + 1) = 4 = 1, 2, 3$  and 6

$$72 = 2 \times 2 \times 2 \times 3 \times 3 = 2^3 \times 3^2$$

Factors =  $(3 + 1) \times (2 + 1) = 12$

**Ex.3** Find the factors of composite number 360

**Sol.**  $360 = 2 \times 2 \times 2 \times 3 \times 3 \times 5$   
 $= 2^3 \times 3^2 \times 5^1$

Factors =  $(3 + 1)(2 + 1)(1 + 1) = 24$ .

## 7. Counting Number of Trailing Zeros

Sometimes we come across problems in which we have to count number of zeros at the end of factorial of any number. For example

Number of zero at the end of  $10!$

$$10! = 10 \times 9 \times 8 \times 7 \times 6 \times 5 \times 4 \times 3 \times 2 \times 1$$

Here basically we have to count number of fives, because multiplication of five by any even number will result in 0 at the end of final product. In  $10!$  we have 2 fives thus total number of zeros are 2.

**Short Cut:**

Counting number of zeros at the end of  $n!$

Value will be  $\frac{n}{5} + \frac{n}{5^2} + \frac{n}{5^3} + \frac{n}{5^4} \dots$

The integral value of this sum will be the total number of zeros.

**Ex. 4** Number of zeros at the end of  $100!$

**Sol.**  $\frac{100}{5} + \frac{100}{5^2} + \frac{100}{5^3} +$

integral value will be

$$20 + 4 = 24 \text{ zeros}$$

**Ex.5** Number of zeros at the end of  $126!$

**Sol.**  $\frac{126}{5} + \frac{126}{5^2} + \frac{126}{5^3} + \frac{126}{5^4}$

integral value will be

$$25 + 5 + 1 = 31 \text{ zeros.}$$

## 8. Cyclicity

Cyclicity of a number is used mainly for the calculation of unit digits.

### 1. Cyclicity of 1.

In  $1^n$ , unit digit will always be 1.

### 2. Cyclicity of 2.

$$2^1 = 2$$

$$2^2 = 4$$

$$2^3 = 8$$

$$2^4 = 16$$

$$2^5 = 32$$

$$2^6 = 64$$

$$2^7 = 128$$

$$2^8 = 256$$

After every four intervals it repeats so cycle of 2 is 2, 4, 8, 6.

**Ex.6** Unit digit of  $2^{323}$

**Sol.** Here 2, 4, 8, 6 will repeat after every four interval till 320 next digit will be 2, 4, 8. So unit digit of  $2^{323}$  will be 8.

**Ex.7** Find unit digit of  $12^{12} \times 22^{22}$

**Sol.** Unit digit of  $12^{12}$  will be 6 and  $22^{22}$  will be 4. So unit digit of  $12^{12} \times 22^{22}$  will be

$$6 \times 4 = 24 \text{ ; } \text{4 Ans.}$$

### 3. Cyclicity of 3.

$$3^1 = 3$$

$$3^2 = 9$$

$$3^3 = 27$$

$$3^4 = 81$$

$$3^5 = 243$$

$$3^6 = 729$$

$$3^7 = 2187$$

$$3^8 = 6561$$

After every four intervals 3, 9, 7 and 1 are repeated. So cycle of 3 is 3, 9, 7, 1.

**Ex.8** Find unit digit of  $133^{133}$ .

**Sol.** Cycle of 3 is 3, 9, 7, 1 which repeats after every four intervals till  $133^{132}$ . So next unit digit will be 3.

### 4. Cyclicity of 4.

$$4^1 = 4$$

$$4^2 = 16$$

$$4^3 = 64$$

$$4^4 = 256$$

Cycle is 4, 6, i.e.

Unit digit of  $4^n$  depends on value of  $n$ .

If  $n$  is odd unit digit is 4 and if  $n$  is even digit is 6.

**Ex.9** Find unit digit of  $4^{1024}$ .

**Sol.** Since 1024 is even number unit digit will be 6.

**Ex.10** Find unit digit of  $133^{63} \times 4^{49}$ .

**Sol.** Unit digit of  $133^{63}$  is 7 and unit digit of  $4^{49}$  is 4 so unit digit of  $133^{63} \times 4^{49}$  will be  $7 \times 4 = 28$  i.e. 8.

### 5. Cyclicity of 5.

$$5^1 = 5$$

$$5^2 = 25$$

$$5^3 = 125$$

$$5^4 = 625$$

Unit digit will always be 5.

### 6. Cyclicity of 6.

$$6^1 = 6$$

$$6^2 = 36$$

$$6^3 = 216$$

$$6^4 = 1296$$

Unit digit will always be 6.

**Ex.11** Find unit digit of  $4^{69} \times 6^5$

**Sol.** Unit digit of  $4^{69}$  is 4 and unit digit of  $6^5$  is 6 so unit digit of  $4^{69} \times 6^5$  will be  $4 \times 6 = 24$  i.e. 4.

### 7. Cyclicity of 7.

$$7^1 = 7$$

$$7^2 = 49$$

$$7^3 = 343$$

$$7^4 = 2401$$

$$7^5 = 16807$$

$$7^6 = 117649$$

$$7^7 = 823543$$

$$7^8 = 5764801$$

Cycle of 7 is 7, 9, 3, 1

**Ex.12** Find unit digit of  $17^{17} \times 27^{27}$

**Sol.** Unit digit of  $17^{17}$  is 7 and unit digit of  $27^{27}$  is 3. So unit digit of  $17^{17} \times 27^{27}$  will be  $7 \times 3 = 21$  i.e. 1.

### 8. Cyclicity of 8.

$$8^1 = 8$$

$$8^2 = 64$$

$$8^3 = 512$$

$$8^4 = 4096$$

$$8^5 = 32768$$

So cycle of 8 is 8, 4, 2, 6.

**Ex.13** Find unit digit of  $18^{18} \times 28^{28} \times 288^{288}$ .

**Sol.** Unit digit of  $18^{18}$  is 4, unit digit of  $28^{28}$  is 6, unit digit of  $288^{288}$  is 6. So unit digit of  $18^{18} \times 28^{28} \times 288^{288}$  will be  $4 \times 6 \times 6 = 144$  i.e. 4.

### 9. Cyclicity of 9.

$$9^1 = 9$$

$$9^2 = 81$$

$$9^3 = 729$$

$$9^4 = 6561$$

Cycle of 9 is 9, 1.

In  $9^n$  unit digit will be 9 if n is odd and unit digit will be 1 if n is even.

**Ex.14** Find unit digit of

$$11^{11} + 12^{12} + 13^{13} + 14^{14} + 15^{15}$$

**Sol.** Unit digit of  $11^{11}$  is 1

Unit digit of  $12^{12}$  is 6

Unit digit of  $13^{13}$  is 3

Unit digit of  $14^{14}$  is 6

Unit digit of  $15^{15}$  is 5

So unit digit of given sum will be

$$1 + 6 + 3 + 6 + 5 = 21 \text{ i.e. } 1.$$

### Remember

#### Cyclicity table

$$1 : 1$$

$$2 : 2, 4, 6, 8$$

$$3 : 3, 9, 7, 1$$

$$4 : 4, 6$$

$$5 : 5$$

$$6 : 6$$

$$7 : 7, 9, 3, 1$$

$$8 : 8, 4, 2, 6$$

$$9 : 9, 1$$

$$0 : 0$$

### 9. Remainder Theorem

Remainder of expression  $\frac{a \times b \times c}{n}$  [i.e.  $a \times b \times c$  when divided by n] is equal to the remainder of expression

$\frac{a_n \times b_n \times c_n}{n}$  [i.e.  $a_n \times b_n \times c_n$  when divided by n], where

$a_n$  is remainder when a is divided by n,

$b_n$  is remainder when b is divided by n, and

$c_n$  is remainder when c is divided by n.

**Ex. 15** Find the remainder of  $15 \times 17 \times 19$  when divided by 7.

**Sol.** Remainder of expression  $\frac{15 \times 17 \times 19}{7}$  will be equal to  $\frac{1 \times 3 \times 5}{7} = \frac{15}{7} = \frac{1}{7}$ .  
i.e. 1.

On dividing 15 by 7 we get 1 as remainder

On dividing 17 by 7 we get 3 as remainder

On dividing 19 by 7 we get 5 as remainder and combined remainder will be equal to remainder

of  $\frac{15}{7}$  i.e. 1.

## 10. Polynomial Theorem

This is very powerful theorem to find the remainder.

According to polynomial theorem.

$$(x + a)^n = x^n + {}^nC_1 x^{n-1} a + {}^nC_2 x^{n-2} a^2 + {}^nC_3 x^{n-3} a^3 \dots {}^nC_{n-1} x^1 a^{n-1} + a^n \quad \dots(1)$$

$$\therefore \frac{(x + a)^n}{x} = \frac{{}^nC_0 x^n + {}^nC_1 x^{n-1} a + {}^nC_2 x^{n-2} a^2 + {}^nC_3 x^{n-3} a^3 + \dots {}^nC_{n-1} x^1 a^{n-1} + {}^nC_n a^n}{x} \quad \dots(2)$$

remainder of expression (2) will be equal to

remainder of  $\frac{a^n}{x}$  because rest of the term contains

$x$  are completely divisible by  $x$ .

**Ex. 16** Find the remainder of  $\frac{9^{99}}{8}$ .

**Sol.**  $\frac{9^{99}}{8} = \frac{(8+1)^{99}}{8}$

According to polynomial theorem remainder will

be equal to remainder of the expression  $\frac{1^{99}}{8}$

which is equal to 1.

**Ex. 17** Find remainder of  $\frac{5^{100}}{7}$

**Sol.**  $\frac{5^{100}}{7} = \left[ \frac{3 \times 7 + 4}{7} \right]^{50} \Rightarrow \frac{(4)^{50}}{7}$

$$\Rightarrow \frac{2^{100}}{7} \Rightarrow \frac{(2^3)^{33} \times 2}{7} \Rightarrow \frac{(7+1)^{33}}{7} \times 2 \Rightarrow \frac{1 \times 2}{7}$$

$\Rightarrow$  Remainder is 2.

## 11. More on Remainders

### Case-I

On dividing a number by  $a, b$  &  $c$  if we get  $a-k, b-k$  and  $c-k$  as remainder respectively then that number will be  $n \times \text{LCM of } [a, b, c] - k$ .

**For ex (I):** On dividing a number by 4, 5 & 6 we get 3, 4, & 5 as remainder. Find the number.

**Sol.:**

Remainder 4, 5, 6  
3, 4, 5,  
which is equal to  $(4-1), (5-1), (6-1)$ ,  
so that number will be:

$$n \times \text{LCM of } (4, 5, 6) - 1 = 60n - 1$$

If  $n = 1$ ,  $60 - 1 = 59$  is smallest such natural number.

**Note:**  $n$  such numbers are possible. Here we have taken  $n$  as 1. Other numbers are 119, 179, 239, etc. Where value of  $n$  is 2, 3, & 4 respectively.

**Ex. 18** On dividing a number by 5, 6 and 7 we get 3, 4 and 5 as remainder. Find the number.

**Sol.**

Remainder 5, 6, 7  
3, 4, 5  
which is equal to  $(5-2), (6-2), (7-2)$

that number will be:

$$n \times \text{LCM of } (5, 6, 7) - 2 = 210 - 2 = 208.$$

**Note:** Here we have taken value of  $n$  as 1.

**Ex. 19** On dividing a number by 4, 5 and 6 we get 2, 3 and 4 as remainder find highest possible three digit such number.

**Sol.**

Remainder 4, 5, 6  
2, 3, 4  
which is equal to  $(4-2), (5-2), (6-2)$ , that  
number will be:

$$n \times \text{LCM of } [4, 5, 6] - 2 = n \times 60 - 2$$

When  $n = 1$  we get 58. Highest possible three digit such number will be 958.

**Ex. 20** On dividing a number by 5, 6 and 7 we get 3, 4 and 5 as remainder. Find highest possible three digit such number.

**Sol.**

Remainder 5, 6, 7  
3, 4, 5  
which is equal to  $(5-2), (6-2), (7-2)$  that  
number will be:

$$n * \text{LCM}(5, 6, 7) - 2 = n \times 210 - 2$$

Highest possible three digit number will be 838.

### Case-II

On dividing a number a, b and c if we get k as remainder always, then that number will be  $(n - 1) \text{ LCM of } (a, b, c) + k$ .

**Ex.21** On dividing a number by 5, 6 and 7 if we get 2 as remainder always, find that number

**Sol.** That number will be

$$\begin{aligned} & (n - 1) \times \text{LCM of } [5, 6, 7] + 2 \\ \Rightarrow & 2 \text{ is such smallest number} \\ & \text{next number will be} = 210 + 2 = 212 \end{aligned}$$

### Case-III

If a number after adding k is exactly divisible by a, b and c then that number will be.

$$n \times \text{LCM}(a, b, c) - k$$

**Ex.22** Find a number which after adding 7 is divisible by 10, 11 and 12.

**Sol.** That number will be

$$\begin{aligned} & n \times \text{LCM of } [10, 11, 12] - 7 \\ & \text{if } n = 1 \text{ then} \\ & 660 - 7 = 653 \text{ Ans.} \end{aligned}$$

## 12. Base System

The Number system is used to represent any number using a set of symbols (digits /letters). The base defines the number of symbols in particular base system. We generally work in Decimal system as there are 10 digits (0, 1, 2, .....9). Some others systems are;

Binary base system: 2 symbols: 0, 1

Octal base system: 8 symbols: 0,1,2,3,4,5,6,7

Hexadecimal system: 16 symbols:

0,1,2,3,4,5,6,7,8,9, A = 10, B = 11, C = 12,

D = 13, E = 14, F = 15

Converting any number from any Base system to Decimal number system:

$$\begin{aligned} abcd.efg_B &= a \times B^3 + b \times B^2 + c \times B^1 + d \times B^0 \\ &+ e \times B^{-1} + f \times B^{-2} + g \times B^{-3} \end{aligned}$$

**Example:**

$$\begin{aligned} 1234.56_8 &= 1 \times 8^3 + 2 \times 8^2 + 3 \times 8^1 + 4 \times 8^0 \\ &+ 5 \times 8^{-1} + 6 \times 8^{-2} \\ &= 512 + 128 + 24 + 4 + 0.625 + 0.093750 \\ &= 668.718750 \end{aligned}$$

### Converting any number from Decimal to other Base system:

Divide the number by base and get the first remainder  $r_1$  and Quotient  $q_1$ .

Now divided  $q_1$  by base and get remainder  $r_2$  and Quotient  $q_2$ .

Repeat the following process till we get the quotient  $q_n = 0$ .

Now the decimal number in base b is  $r_n r_{n-1} \dots r_3 r_2 r_1$ .

**Example 1:**

$$1. \quad (149)_{10} = ( )_7$$

7	149	Remainder
7	21	2
7	3	0
	0	3

$$(149)_{10} = (302)_7$$

$$2. \quad \text{Add } (432)_7 + (355)_7$$

11 ← carry

$$(432)_7$$

$$(355)_7$$

$$1120$$

$$\text{as } 2 + 5 = (7)_{10} = (10)_7$$

$$3 + 5 + 1 = (9)_{10} = (12)_7$$

$$1 + 4 + 3 = (8)_{10} = (11)_7$$

### Solved Examples

**Q.1** The sum of the digits of a two-digit number is 10, while when the digits are reversed, the number decreases by 54. Find the the changed number.

- (a) 28 (b) 19  
(c) 37 (d) 46

**Sol. (a)**

Going through options we get  $82 - 28 = 54$ .

**Q.2** The sum of two numbers is 15 and their geometric mean is 20% lower than their arithmetic mean. Find the numbers.

- (a) 11, 4 (b) 12, 3  
(c) 13, 2 (d) 10, 5

**Sol. (b)**

Going through options only 12 and 3 satisfies the condition

$$AM = \frac{12+3}{2} = 7.5$$

$$GM = \sqrt{12 \times 3} = 6\sqrt{3} \text{ which is 20\% less than 7.5.}$$

**Q.3** If A381 is divisible by 11, find the value of the smallest natural number A?

- (a) 5 (b) 6  
(c) 7 (d) 9

**Sol. (c)**

A 381 is divisible by 11 if and only if  
(A + 8) - (3 + 1) is divisible by 11.  
So, A=7 Satisfies the condition .

**Q.4** Find the LCM of 5/2, 8/9, 11/14.

- (a) 280 (b) 360  
(c) 420 (d) None of these

**Sol. (d)**

$$\text{LCM of fraction} = \frac{\text{LCM of numerators}}{\text{H. C. F of Denominators}}$$

Here, 5/2, 8/9, 11/14, so

$$\text{LCM} = \frac{\text{LCM of (5, 8, 11)}}{\text{HCF of (2, 9, 14)}} = \frac{440}{1} = 440$$

**Q.5** Find the number of divisors of 1420.

- (a) 14 (b) 15  
(c) 13 (d) 12

**Sol. (d)**

$$1420 = 142 \times 10 = 71 \times 2 \times 2 \times 5 = 2^2 \times 5^1 \times 71^1$$

$$\text{No. of divisor} = (2+1)(1+1)(1+1) = 12.$$

**Q.6** A milkman has three different qualities of milk. 403 gallons of 1<sup>st</sup> quality, 465 gallons of 2<sup>nd</sup> quality and 496 gallons of 3<sup>rd</sup> quality. Find the least possible number of bottles of equal size in which different milk of different qualities can be filled without mixing?

- (a) 34 (b) 46  
(c) 26 (d) 44

**Sol. (d)**

It is given that gallons of  
1<sup>st</sup> quality : 403

2<sup>nd</sup> quality : 465

3<sup>rd</sup> quality : 496

least number of bottles will be in size of HCF (403, 465 and 496)

$$403 = 13 \times 31$$

$$465 = 15 \times 31$$

$$496 = 16 \times 31$$

HCF = 31. So we required 13+15+16 = 44 bottles.

**Q.7** What is the greatest number of 4 digits that when divided by any of the numbers 6, 9, 12, 17 leaves a remainder of 1?

- (a) 9997 (b) 9793  
(c) 9895 (d) 9487

**Sol. (b)**

$$\text{LCM of 6, 9, 12, 17} = 612$$

greatest number of 4 digit divisible by 612 is 9792, to get remainder 1 number should be 9792+1.

**Q.8** Which of the following is not a perfect square?

- (a) 100858 (b) 3, 25, 137  
(c) 945723 (d) All of these

**Sol. (d)**

Square of number never ends up with 2, 3, 7, 8.

**Q.9** The LCM of  $(16 - x^2)$  and  $(x^2 + x - 6)$  is

- (a)  $(x - 3)(x + 3)(4 - x^2)$   
(b)  $4(4 - x^2)(x + 3)$   
(c)  $(4 - x^2)(x - 3)$   
(d) None of these

**Sol. (d)**

$$16 - x^2 = (4 - x)(4 + x)$$

$$(x^2 + x - 6) = (x + 3)(x - 2)$$

$$\text{LCM will } (16 - x^2)(x^2 + x - 6)$$

**Q.10** GCD of  $x^2 - 4$  and  $x^2 + x - 6$  is

- (a)  $x + 2$  (b)  $x - 2$   
(c)  $x^2 - 2$  (d)  $x^2 + 2$

**Sol. (b)**

$$x^2 - 4 = (x - 2)(x + 2)$$

$$(x^2 + x - 6) = (x + 3)(x - 2)$$

$$\text{GCD} = (x - 2)$$

**Q.11** Decompose the number 20 into two terms such that their product is the greatest.

- (a)  $x_1 = x_2 = 10$  (b)  $x_1 = 5, x_2 = 15$   
(c)  $x_1 = 8, x_2 = 12$  (d) None of these

**Sol. (a)**

If  $x + y = \text{constant}$  then  $xy$  will be maximum when  $x = y$

$$\text{here, } x_1 + x_2 = 20$$

$$x_1 = x_2 = 10$$

**Q.12** Find the GCD of the polynomials  $(x + 3)^2 (x - 2) (x + 1)^2$  and  $(x + 1)^3 (x + 3) (x + 4)$ .

- (a)  $(x + 3)^3 (x + 1)^2 (x - 2)(x + 4)$   
 (b)  $(x + 3) (x - 2) (x + 1) (x + 4)$   
 (c)  $(x + 3) (x + 1)^2$   
 (d) None of these

**Sol. (c)**

GCD of  $(x+3)(x-2)(x+1)^2$  and

$(x+1)^3(x+3)(x+4)$  will be  $(x+3)(x+1)^2$

**Q.13** Find the LCM of  $(x + 3) (6x^2 + 5x - 4)$  and  $(2x^2 + 7x + 3) (x + 3)$

- (a)  $(2x + 1) (x + 3) (3x + 4)$   
 (b)  $(4x^2 - 1) (x + 3)^2 (3x + 4)$   
 (c)  $(4x^2 - 1) (x + 3) (3x + 4)$   
 (d)  $(2x - 1) (x + 3) (3x + 4)$

**Sol. (b)**

$$(x + 3)(6x^2 + 5x - 4) = (x + 3)(2x - 1)(3x + 4)$$

$$(2x^2 + 7x + 3)(x + 3) = (2x + 1)(x + 3)(x + 3)$$

$$\text{LCM} = (2x + 1)(2x - 1)(x + 3)^2(3x + 4)$$

$$= (4x^2 - 1)(x + 3)^2(3x + 4)$$

**Q.14** The product of three consecutive natural numbers, the first of which is an even number, is always divisible by

- (a) 12  
 (b) 24  
 (c) 8  
 (d) All of these

**Sol. (d)**

Three consecutive number will be  $n(n + 1)(n + 2)$  if  $n$  is even number then  $(n + 2)$  will also be an even number and one of them will be divisible by 3. Hence number is always divisible by 12.

**Q.15** Find the pairs of natural numbers whose least common multiple is 78 and the greatest common divisor is 13.

- (a) 58 and 13 or 16 and 29  
 (b) 38 and 23 or 36 and 49  
 (c) 18 and 73 or 56 and 93  
 (d) 78 and 13 or 26 and 39

**Sol. (d)**

$$\text{LCM} = 78 \text{ and } \text{GCD} = 13$$

Clearly 13, 78 and 26, 39 are the two numbers.

**Q.16** Fill in the blank indicated by a star in the number  $4*56$  so as to make it divisible by 33

- (a) 3  
 (b) 4  
 (c) 5  
 (d) None of these

**Sol. (a)**

$4*56$  is divisible by 33 if and only if it is divisible by 3 and 11.

$4*56$  will be divisible by 3 if \* will be equal to 0, 3, 6, 9

$4*56$  is divisible by 11 if  $(4 + 5) - (* + 6)$  will be divisible by 11 so \* should be 3.

**Q.17** Find the least number which being divided by 9, 12, 16 and 30 leaves in each case a remainder 3?

- (a) 623  
 (b) 723  
 (c) 728  
 (d) None of these

**Sol. (b)**

LCM of 9, 12, 16 and 30 is 720 so required number is  $\text{LCM} + 3 = 723$

**Q.18** Find the greatest number less than 10000 which is divisible by 48, 60 and 64

- (a) 9600  
 (b) 8500  
 (c) 7600  
 (d) None of these

**Sol. (a)**

The required number will be the largest four digit number in form of  $n \times (\text{LCM})$  of 48, 60 and 64 LCM of 48, 60 and 64 is 960

So the largest four digit number will be 9600

**Q.19** Find the least multiple of 11 which when divided by 8, 9, 12, 14 leaves 4 as remainder in each case.

- (a) 1012  
 (b) 1037  
 (c) 1090  
 (d) None of these

**Sol. (a)**

The number is divisible by 11 and can be written in form  $n(\text{LCM}) + 4$ , LCM of 8, 9, 12, 14 is 504  
 So the number may be 508 & 1012 but 508 is not divisible by 11 so it is 1012

**Q.20** The LCM of two number is 12 times their HCF. The sum of HCF and LCM is 403. If one number is 93 find the other.

- (a) 134  
 (b) 124  
 (c) 128  
 (d) None of these

**Sol. (b)**

It is given that  $\text{LCM} = 12 \text{ times HCF}$   
also  $\text{LCM} + \text{HCF} = 403$

So,  $13 \text{ HCF} = 403, \Rightarrow \text{HCF} = 31$

$\text{LCM} = 372$  also we know that  $\text{HCF}$

$\text{HCF} \times \text{LCM} = \text{Number}(1) \times \text{Number}(2)$

$31 \times 372 = 93 \times N_2 \therefore N_2 = 124$

**Q.21** I have to spend  $1/10$  of my income on house rent,  $1/10$  of remainder on conveyance  $1/3$  of further remainder on children's education after which I have Rs. 648 left over. What is my income?

- (a) Rs. 1200 (b) Rs. 1400  
(c) Rs. 1700 (d) None of these

**Sol. (a)**

One alternate method

Let I have  $x$  rupees

After spending  $\frac{1}{10}$  of it on house rent I have

$\frac{9x}{10}$ . Now out of  $\frac{9x}{10}$  I spent  $\frac{1}{10}$  of it i.e.,  $\frac{9}{100}x$  on conveyance so remainder will be

$$\frac{9}{10}x - \frac{9}{100}x = \frac{81x}{100}$$

Further I spent  $\frac{1}{3}$  of  $\frac{81x}{100}$  i.e.  $\frac{27x}{100}$  into children

education now I have  $\frac{54x}{100}$ ,

$$\text{So, } \frac{54x}{100} = 648, x = 1200$$

**Q.22** A man had two sons. To the elder he gave  $\frac{5}{11}$  of

his property, to the younger  $\frac{5}{11}$  of remainder, the rest to the widow. Find the Share of the sons if the widow gets Rs. 3600.

- (a) Rs. 1200, 1000 (b) Rs. 6000, 2000  
(c) Rs. 7500, 1000 (d) None of these

**Sol. (d)**

Younger son gets

$$3600 \times \left( \frac{1}{1 - \frac{5}{11}} \right) \times \frac{5}{11} = \text{Rs. 3000}$$

Elder son gets

$$3000 \times \left( \frac{1}{1 - \frac{5}{11}} \right) = \text{Rs. 5500}$$

**Q.23** If a number is divisible by 899, the remainder will be 63. If same number is divisible by 29, the remainder will be

- (a) 10 (b) 5  
(c) 4 (d) 2

[RRB (JE) 2014]

**Sol. (b)**

Let quotient be  $x$ .

$$\therefore \text{Number} = 899x + 63 = 29(31x + 2) + 5$$

$\therefore$  It is clear that if number is divided by 29, the remainder will be 5.

**Q.24** Unit's place digit in  $962 \times 357 \times 133$  is

- (a) 2 (b) 3  
(c) 7 (d) 0

[RRB (JE) 2014]

**Sol. (a)**

Unit's place digit in  $962 \times 357 \times 133$

$$= \text{Unit's place digit in } 2 \times 7 \times 3$$

$$= \text{Unit's place digit in } 14 \times 3$$

$$= \text{Unit's place digit in } 4 \times 3$$

$$= \text{Unit's place digit in } 12 = 2$$

**Q.25** What is the sum of the first 17 terms of an arithmetic progression if the first term is  $-20$  and last term is  $28$ ?

- (a) 68 (b) 156  
(c) 142 (d) 242

[RRB (JE) 2015]

**Sol. (a)**

Here, first term  $= -20$  and last term

$$= 28, n = 17$$

$$\therefore \text{Required sum} = n \frac{(\text{First term} + \text{last term})}{2}$$

$$= \frac{17}{2} (-20 + 28) = 68$$

**Q.26** By adding the same constant to each of  $31, 7, -1$  a geometric progression results. The common ratio is

- (a) 13 (b)  $2\frac{1}{3}$   
(c)  $-12$  (d) None of these

[RRB (JE) 2015]



**Sol. (d)**

A sequence is said to be in GP if the ratio of a term to its preceding term is constant. In 31, 7, -1. If we add 5, by hit and trial method, the sequence formed is 36, 12, 4 which is in GP

$$\text{Common ratio} = \frac{123}{36} = \frac{4}{12} = \frac{1}{3}$$

**Q.27** What is the sum of the first 12 terms of an arithmetic progression if the first term is -19 and last term is 36?

- (a) 192 (b) 230  
(c) 102 (d) 214

[RRB (JE) 2014]

**Sol. (c)**

Here first term

$$= -19 \text{ and last term} = 36$$

$$n = 12$$

$$\therefore \text{Required sum} = n \left( \frac{\text{First term} + \text{Last term}}{2} \right)$$

$$= 12 \left( \frac{-19 + 36}{2} \right) = 12 \times \frac{17}{2} = 102$$

**Q.28** If 7 times of the seventh term of an Arithmetic Progression (AP) is equal to 11 times its eleventh term, then the 18th term of the AP will be,

- (a) 1 (b) 0  
(c) 2 (d) -3

[RRB (JE) 2015]

**Sol. (b)**

According to the question,

$$7 \times \text{seventh term} = 11 \times \text{eleventh term}$$

$$7 \times [a + (7 - 1)d] = 11 \times [a + (11 - 1)d]$$

$$7 \times [a + 6d] = 11 \times [a + 10d]$$

$$a(18 - 1)d = 0$$

$$\text{Hence, 18th term of AP} = 0$$



## PRACTICE SET : QUESTIONS

**Q.1**  $\sqrt{3\sqrt{80} + \frac{3}{9+4\sqrt{5}}} = ?$

- (a)  $\sqrt{3\sqrt{5}}$  (b) 3  
(c)  $3\sqrt{3}$  (d)  $3 + 2\sqrt{5}$

**Q.2**  $x$  and  $y$  are integers and if  $\frac{x^2}{y^3}$  is even integer

then which of the following must be an even integer?

- (a)  $x - y$  (b)  $y + 1$   
(c)  $\frac{x^2}{y^4}$  (d)  $xy$

**Q.3** What is the tens' digit of the sum of the first 50 terms of 1, 11, 111, 1111, 11111, 111111,.....?

- (a) 2 (b) 4  
(c) 5 (d) 8

**Q.4** If  $81^y = \frac{1}{27^x}$ , in terms of  $y$ ,  $x = ?$

- (a)  $\frac{3y}{4}$  (b)  $-\frac{3y}{4}$   
(c)  $\frac{4y}{3}$  (d)  $-\frac{4y}{3}$

**Q.5** If  $\frac{1}{n+1} < \frac{1}{31} + \frac{1}{32} + \frac{1}{33} < \frac{1}{n}$ ; then  $n$  ?

- (a) 9 (b) 10  
(c) 11 (d) 12

**Q.6** If one integer is greater than another integer by 3, and the difference of their cubes is 117, what could be their sum?

- (a) 11 (b) 7  
(c) 8 (d) 9

**Q.7** Which of these has total 24 positive factors?

- (a)  $2^{15} \times 3^3$  (b)  $2^7 \times 12^3$   
(c)  $2^6 \times 3^4$  (d)  $63 \times 55$

**Q.8** Two numbers,  $x$  and  $y$  are such that when divided by 6, they leave remainder 4 and 5 respectively. Find the remainder when  $x^3 + y^3$  is divided by 6?

- (a) 2 (b) 3  
(c) 4 (d) 5

**Q.9** What is the remainder when  $N = (1! + 2! + 3! + \dots + 1000!)^{40}$  is divided by 10?

- (a) 1 (b) 3  
(c) 7 (d) 8

**Q.10** Set A is formed by selecting some of the numbers from the first 100 natural numbers such that the HCF of any two numbers in the set A is 5, what is the maximum number elements that set A can have?

- (a) 7 (b) 8  
(c) 9 (d) 10



- Q.11** Let  $x$  and  $y$  be positive integers such that  $x$  is prime and  $y$  is composite. Then,  
 (a)  $y - x$  cannot be an even integer  
 (b)  $\frac{x+y}{x}$  cannot be an even integer  
 (c)  $(x+y)$  cannot be even.  
 (d) None of the above statements are true
- Q.12** Let  $N = 1421 \times 1423 \times 1425$ . What is the remainder when  $N$  is divided by 12?  
 (a) 0 (b) 9  
 (c) 3 (d) 6
- Q.13** When a four digit number is divided by 85 it leaves a remainder of 39. If the same number is divided by 17 the remainder would be ?  
 (a) 2 (b) 5  
 (c) 7 (d) 9
- Q.14** Integers 34041 and 32506 when divided by a three-digit integer  $n$  leave the same remainder. What is  $n$ ?  
 (a) 289 (b) 367  
 (c) 453 (d) 307
- Q.15** A box contains 100 tickets, numbered from 1 to 100. A person picks out three tickets from the box, such that the product of the numbers on two of the tickets yields the number on the third ticket. Which of the following tickets can never be picked as third ticket?  
 (a) 10 (b) 12  
 (c) 25 (d) 26
- Q.16**  $N$  is a natural number, then how many values of  $N$  are possible such that  $\frac{6N^3 + 3N^2 + N + 24}{N}$  is also a Natural Number?  
 (a) 6 (b) 7  
 (c) 8 (d) 9
- Q.17** What is the unit digit of  $39^{53} \times 27^{23} \times 36^{12}$ ?  
 (a) 2 (b) 4  
 (c) 6 (d) 8
- Q.18** How many number of zeros are there if we multiply all the prime numbers between 0 and 200.  
 (a) 1 (b) 2  
 (c) 3 (d) 4
- Q.19** A man wrote all the natural numbers starting from 1 in a series. What will be the 50<sup>th</sup> digit of the number?  
 (a) 1 (b) 2  
 (c) 3 (d) 4
- Q.20**  $N = n(n+1)(n+2)(n+3)(n+4)$ ; where  $n$  is a natural number. Which of the following statement/s is/are true?  
 1. Unit digit of  $N$  is 0.  
 2.  $N$  is perfectly divisible by 24.  
 3.  $N$  is perfect square.  
 4.  $N$  is odd.  
 (a) 3 only (b) 3 and 4 only  
 (c) 1 only (d) 1 and 2 only
- Q.21** How many factors of  $N = 12^{12} \times 14^{14} \times 15^{15}$  are multiple of  $K = 12^{10} \times 14^{10} \times 15^{10}$ ?  
 (a)  $2 \times 4 \times 5$  (b)  $3 \times 5 \times 6$   
 (c)  $8 \times 7 \times 4 \times 5$  (d)  $9 \times 8 \times 6 \times 5$
- Q.22** In a certain base  $137 + 254 = 402$  then  
 What is the sum of  $342 + 562$  in that base  
 (a) 904 (b) 1014  
 (c) 1104 (d) 1024

### Solutions: Number Systems

1. (c)

Method (i)  $\sqrt{3\sqrt{80} + \frac{3}{9+4\sqrt{5}}}$  using rationalization

$$= \sqrt{3\sqrt{80} + \frac{3}{9+4\sqrt{5}} \times \left( \frac{9-4\sqrt{5}}{9-4\sqrt{5}} \right)}$$

$$= \sqrt{3\sqrt{80} + \frac{(3 \times 9 - 3 \times 4\sqrt{5})}{9^2 - (4\sqrt{5})^2}}$$

$$= \sqrt{3\sqrt{80} + \frac{27 - 12\sqrt{5}}{81 - 80}}$$

$$= \sqrt{3\sqrt{16 \times 5} + 27 - 12\sqrt{5}}$$

$$= \sqrt{3 \times 4 \times \sqrt{5} + 27 - 12\sqrt{5}}$$

$$= \sqrt{12\sqrt{5} + 27 - 12\sqrt{5}}$$

$$= \sqrt{27} = 3\sqrt{3}$$

## Alternative Method

$$\sqrt{\left(3\sqrt{80} + \frac{3}{9+4\sqrt{5}}\right)}$$

$$3\sqrt{80} \cong 3\sqrt{81} \cong 27$$

$$\text{and } \frac{3}{9+4\sqrt{5}} < 1$$

$$\begin{aligned}\text{Thus, } \sqrt{3\sqrt{80} + \frac{3}{9+4\sqrt{5}}} &\cong \sqrt{3\sqrt{81}} \\ &\cong \sqrt{3 \times 9} = 3\sqrt{3}\end{aligned}$$

2. (d)

$$\text{if } \frac{x^2}{y^3} = \text{even}$$

$$x^2 = y^3 \text{ even}$$

$$\Rightarrow x^2 \Rightarrow \text{even}$$

and  $x$  is integer

$$\Rightarrow x = \text{even}$$

so only  $xy$  must be even.

3. (b)

$$\begin{array}{ccccccc} & & & & 1 & & \\ & & & & 1 & 1 & \\ & & & 1 & 1 & 1 & \\ & & & \vdots & \vdots & \vdots & \\ 50 \text{ terms} & \dots & \dots & \dots & 1 & 1 & 1 \\ & & & & \hline & & & & 40 \end{array}$$

unit digit  $(1 + 1 \dots 50 \text{ times}) = 0$ 

and carry = 5

tens digit  $(1 + 1 + \dots 49 \text{ times}) + \text{carry } 5 = 4$ 

4. (d)

$$81^y = \frac{1}{27^x}$$

$$\Rightarrow (3)^{4y} = (3^{-3})^x$$

$$\Rightarrow (3)^{4y} = (3)^{-3x}$$

$$\text{as } a^m = a^n$$

$$\text{and } a \neq -1, 0, +1$$

$$\Rightarrow m = n$$

$$\text{so } 4y = -3x$$

$$x = -\frac{4}{3}y$$

5. (b)

$$\frac{1}{30} > \frac{1}{33}; \frac{1}{30} > \frac{1}{31}; \frac{1}{30} > \frac{1}{32}$$

$$\Rightarrow \frac{1}{30} + \frac{1}{30} + \frac{1}{30} > \frac{1}{31} + \frac{1}{32} + \frac{1}{33}$$

$$\Rightarrow \frac{3}{30} > \frac{1}{31} + \frac{1}{32} + \frac{1}{33}$$

$$\Rightarrow \frac{1}{10} > \frac{1}{31} + \frac{1}{32} + \frac{1}{33}$$

$$\Rightarrow \frac{1}{n} = \frac{1}{10}$$

$$\Rightarrow n = 10$$

$$\text{OR } \frac{1}{31} > \frac{1}{33}; \frac{1}{32} > \frac{1}{33}; \frac{1}{33} = \frac{1}{33}$$

$$\Rightarrow \frac{1}{31} + \frac{1}{32} + \frac{1}{33} > \frac{3}{33}$$

$$\Rightarrow \frac{1}{31} + \frac{1}{32} + \frac{1}{33} > \frac{1}{11} = \frac{1}{n+1}$$

$$n = 10$$

6. (b)

Use plugging in

$$\text{as } (x+3)^3 - x^3 = 117$$

$$x+3 \geq 5 \quad \text{as } (x+3)^3 \geq 117$$

$$\text{put } x = 2$$

$$\Rightarrow 5^3 - 2^3 = 125 - 8 = 117$$

$$\Rightarrow x = 2, \quad x+3 = 5$$

So, sum of both numbers = 7

## Alternative Method

$$(x+3)^3 - x^3 = 117$$

$$x^3 + (3)^3 + 3(x)(3)(x+3) - x^3 = 117$$

$$x^3 + 27 + 27x + 9x^2 - x^3 = 117$$

$$\Rightarrow 9x^2 + 27x - 90 = 0$$

$$\Rightarrow x^2 + 3x - 10 = 0$$

$$\Rightarrow (x+5)(x-2) = 0$$

$$x = 2, -5$$

$$\Rightarrow \text{so either } 2, 5, \text{ or } -5, -2$$

$$\text{Thus sum} = 7, \text{ OR} = -7$$

7. (d)

Put in prime factorization theorem.

$$(a) \quad 2^{15} \times 2^3 = 3^5 \times 7^5 \times 2^3$$

$$\text{Total factors} = 6 \times 6 \times 4 \neq 24$$

$$(b) \quad 2^7 \times (2^2 \times 3)^3 = 2^{13} \times 3^3$$

$$\text{Total factors} = 14 \times 4 \neq 24$$

$$(c) \quad 2^6 \times 3^4 = \text{factors } 7 \times 5 \neq 24$$

$$(d) \quad 63 \times 55 = 3^2 \times 7^1 \times 5^1 \times 11^1$$

$$\text{Factors} = 3 \times 2 \times 2 \times 2 = 24$$

8. (b)

$$\text{Rem } \frac{[x]}{6} = 4, \quad \text{Rem } \frac{[y]}{6} = 5$$

$$\text{Rem} = \frac{[x^3 + y^3]}{6} = \frac{[4^3 + 5^3]}{6}$$

$$= \frac{[6+125]}{6}$$

$$\Rightarrow \text{Rem} \left[ \frac{4+5}{6} \right] = \text{Rem} \left( \frac{9}{6} \right) = 3$$

9. (a)

$$N = (1! + 2! + 3! + 4! + \dots + 1000!)$$

Now we have to check only

$1! + 2! + 3! + 4!$  as after that will factorial has unit digit as 0

$$5! = 120$$

$$6! = 720 \text{ and so on}$$

Thus unit digit of  $(1! + 2! + 3! + 4! + 0)$  for all other

$$\Rightarrow (1 + 2 + 6 + 4 + 0)^{40}$$

Unit digits of all factorial

$$\Rightarrow (3)^{40} = (3)^{4k}$$

$\Rightarrow 3 \times 3 \times 3 \times 3 \Rightarrow 1$  unit digit. Hence when  $(3)^{40} \div 10$ , Remainder will be 1.

10. (c)

As there should be only 5 which should be common between any two number

so number may be  $(5x_1, 5x_2, 5x_3, \dots, 5x_n)$

and  $\text{HCF}(x_i, x_j) = 1$

Thus, number are

$$(5 \times 1, 5 \times 2, 5 \times 3, 5 \times 5, \dots)$$

because  $(x_i, x_j) = 1$

Then only prime number will work.

so  $5 \times 19 = 95$  is biggest number.

so  $5 \times 1, 5 \times 2, 5 \times 3, 5 \times 5, 5 \times 7, 5 \times 11, 5 \times 13,$

$5 \times 17, 5 \times 19$ , total 9 number.

11. (d)

Plugging in

$$(a) \quad y = 10, x = 2 \\ = 10 - 2 = 8X$$

$$(b) \quad \frac{x+y}{x} = 1 + \frac{y}{x} \\ y = 9, x = 3$$

$$1 + \frac{9}{3} = 1 + 3 = 4X$$

$$(c) \quad (x+y) = 10 + 2 = 12X$$

(d) None of above is true.

12. (c)

$$\text{Rem} \left[ \frac{1421 \times 1423 \times 1425}{12} \right]$$

$$\Rightarrow \text{Rem} \frac{[5 \times 7 \times 9]}{12} = \text{Rem} \frac{[35 \times 9]}{17}$$

$$\text{Rem} \frac{[11 \times 9]}{12} = \text{Rem} \frac{[99]}{12} = 3$$

13. (b)

$$n = 85K + 39$$

$$\text{Now} \quad \frac{n}{17} = \frac{85K + 39}{17} = 5K + \frac{34 + 5}{17}$$

$$= 5K + 2 + \frac{5}{17}$$

$\Rightarrow$  Remainder is 5.

14. (d)

Suppose division 'd' and remainder is 'r'.

$$\Rightarrow 34041 = q_1 d + r$$

$$\text{and } 32506 = q_2 d + r$$

$$\Rightarrow 15365 = (q_1 - q_2)d$$

$\Rightarrow d$  should be factor 1535

So, only 307 is factor of 1535 in given option.

15. (c)

(a)  $100 = 5 \times 2$  possible

(b)  $12 = 6 \times 2$  possible

(c)  $25 = 5 \times 5$  not possible as only one 5 Number ticket

(d)  $30 = 15 \times 2$  possible

16. (c)

Suppose

$$\frac{6N^3 + 3N^2 + N + 24}{N} = M = \text{Natural Number}$$

$$\text{So,} \quad M = 6N^2 + 3N + 1 + \frac{24}{N}$$

Thus to be M as a natural number  $\frac{24}{N}$  should be

Natural number thus N should be factor of 24.

$$\text{So,} \quad 24 = 2^3 \times 3^1$$

$$\text{Factors} = 4 \times 2 = 8$$

8 values can be taken by N.

17. (a)

Unit digit of

$$39^{53} \times 27^{23} \times 36^{12}$$

Unit digit of  $(9^{53} \times 7^{23} \times 6^{12})$

$$= (9^{4K+1} \times 7^{4K+3} \times 6^{4K})$$

$$\Rightarrow (9 \times 3 \times 6) = 2 = \text{units digit}$$

18. (a)

Number of zero's can be calculated by getting power of 10 in number or minimum among powers of 2 or 5 possible in n.

Thus  $2 \times 3 \times 5 \times \dots \dots 97$

so only  $1 \rightarrow 5$ 's and  $1 \rightarrow 2$ 's

Thus only one zero as both 2 and five will occur only once.

19. (c)

123.....910.....

One digit numbers (from 1 to 9) = 9

Now 2 digit number till 50 are  $50 - 9 = 41$  thus total digits used to make pair.

10 11 12.....29.

So total  $20 \times 2 = 40$  digits would be required to write numbers from 10 to 29.

Total digits consumed so far till we write 29 will be  $9 + 40 = 49$ .

50<sup>th</sup> digit which we will write is 3 of 30.

Hence 50<sup>th</sup> digit will be 3.

49 digits are used. So far till 29.

Now, 50<sup>th</sup> digit would be first digit of 30 thus 3.

20. (d)

$N = n(n+1)(n+2)(n+3)(n+4)$  is product of 5 consecutive number.

Thus divisible by  $5! = 120$

So, (i) unit digit is 0 TRUE.

(ii) Perfectly divisible by 24 TRUE.

(iii) N is perfect square not TRUE.

(iv) N is odd X not TRUE.

Thus (d) (i) and (ii) only.

21. (d)

$$N = 12^{12} \times 14^{14} \times 15^{15}$$

$$= (2^2 \times 3)^{12} \times (7 \times 2)^{14} \times (5 \times 3)^{15}$$

$$= 2^{24} \times 3^{12} \times 7^{14} \times 2^{14} \times 5^{15} \times 3^{15}$$

$$= 2^{38} \times 3^{27} \times 5^{15} \times 7^{14}$$

$$K = (12)^{10} \times (14)^{10} \times (15)^{10}$$

$$= 2^{20} \times 3^{10} \times 7^{10} \times 2^{10} \times 3^{10} \times 5^{10}$$

$$= 2^{30} \times 3^{20} \times 5^{10} \times 7^{10}$$

Thus factors of N which are multiple of k are

$$2^{30} \times 3^{20} \times 5^{10} \times 7^{10} (2^8 \times 3^7 \times 5^5 \times 7^4)$$

$$\text{will be } (8+1) \times (7+1) \times (5+1) \times (4+1)$$

$$9 \times 8 \times 6 \times 5$$

22. (b)

$$137_9$$

$$\underline{254_9}$$

$$\underline{402_9}$$

$$(7+4) = (11)_{10} = (2)$$

unit digit is 2 thus 9 is possible base

Thus we have to add using base 9

$$\text{so } 342_9$$

$$\underline{562_9}$$

$$\underline{1014_9}$$

